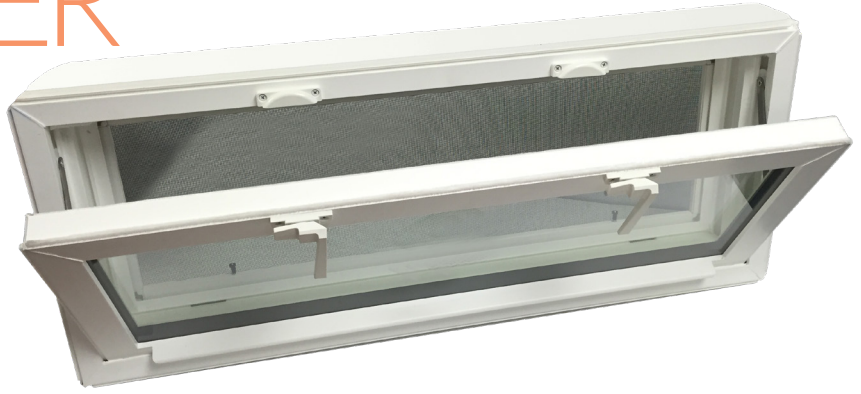




HOPPER  
Pro120



## Product Specifications Pro-Series Hopper Window

**Main Frame** – Comprised of rigid Polyvinylchloride (PVC) multi-hollow extrusions with all exterior walls specified to 0.062” thickness and interior walls specified to 0.050” thickness. It has been designed as a sloped sill hopper window with all corners fusion welded. The window has been designed for both new construction and replacement installations with an extruded integral nail fin added for new construction. The frame has a jamb depth of 3 1/4”. Accessory grooves are incorporated in the design to allow for interior and exterior trim options.

**Sash** – Comprised of rigid Polyvinylchloride (PVC) multi-hollow extrusions with all exterior walls specified to 0.060” thickness and interior walls specified to 0.050” thickness. All sash corners are fusion welded.

**Glazing** – Insulated glass panels are provided in two overall thicknesses. Dual glazed units are 3/4” overall and Triple glazed units are 7/8” overall. All units are assembled with Super Spacer™ warm edge technology. Low-E coated glass and argon gas filled air spaces are incorporated to raise energy efficiency. Each glass unit is dual sealed with the Super Spacer™ adhesive and a secondary hot melt butyl seal along the entire perimeter. Insulated glass units are laid in a back bedding of silicone then held in place with snap in glazing strips.

**Weather Stripping** - All Pro-Series Products come with Owens Corning Air Sealing Technology. This is a dense wool pile with poly fin center wall that out performs conventional weather stripping.

**Hardware** – Windows over 27 3/8” wide get two handle sweep locks and windows up to 27 3/8” wide get one handle sweep lock mounted in the center of the top sash width. Pivoting shoes and sash limit arms are included on each side of the sash.

**Screen** – Screens are comprised of extruded rails and come with Better Vue™ fiberglass insect screening to be less noticeable when looking outside.

**Installation** – Performed by others. Frames must be installed straight, plumb and level following our installation guidelines.

THE  
ENERGY KING  
Windows & Doors